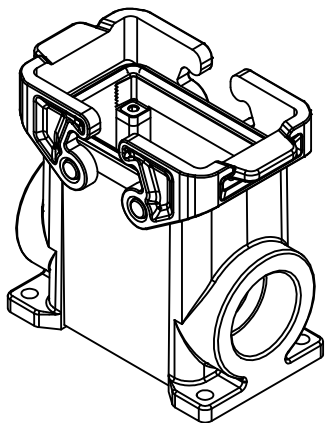
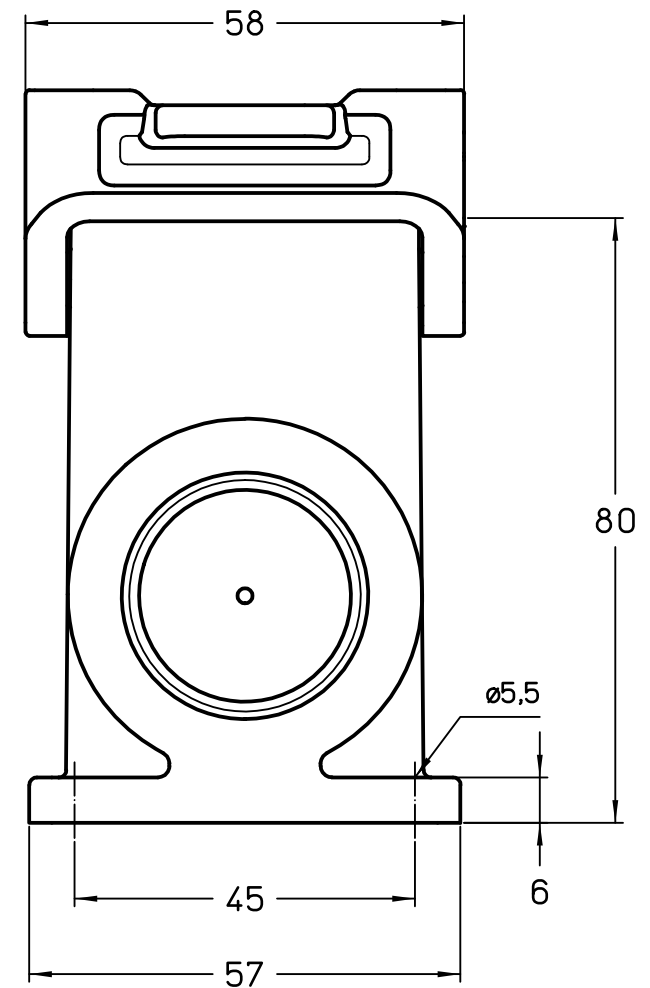
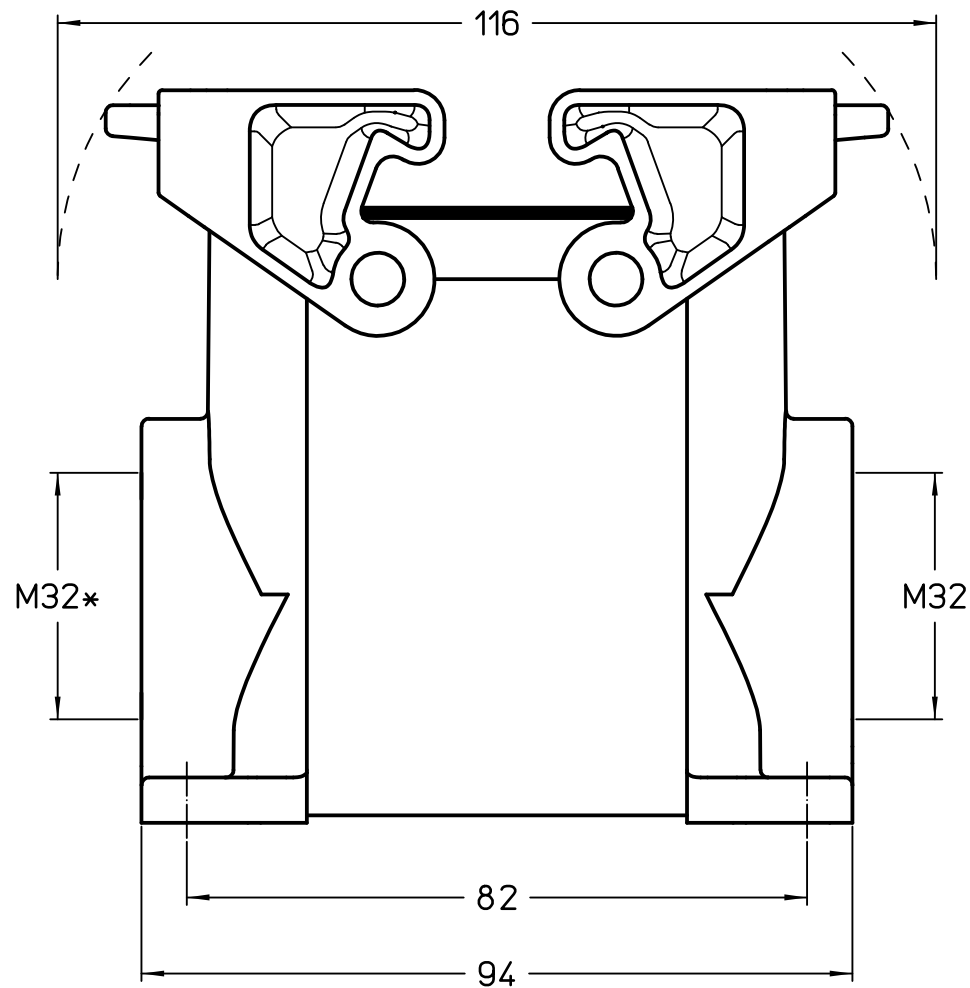


1

2

3

\* closed hole



	Dimensions in mm
Original Size A4	
Date 06/11/23	
Sign. G. Renna	

Simplified representation with dimensions without tolerance

TMAP 10.32B

Insulating surface mounting housing, size "57.27", 1x M32 side entry,  
with 2 levers, with integrated PE jumpers - T-Type

Scale  
1:1



1

2

3